

MINI LIGHT & BLUE LIGHT BRUSHES

2 Alternative Brushes for Latent Print Powder Development

SIRCHIE®

FINGER PRINT LABORATORIES

Shine a little light on latent print powder applications!

Mini Light & Blue Light Brushes

For the most part, latent print powder brushes have seen few changes over the last decade. Here's a change you can really appreciate! We have combined our world famous fiberglass brush with an illumination source to provide light when and where you need it!

These Mini Light Brushes feature a high intensity LED—white for the **MLB100** and blue for the **MLB100** for those situations requiring the use of fluorescent powders. Both have push button and twist cap ON/OFF activation, light-weight metal body and a full-sized replaceable fiberglass brush head (shown to the right). Overall Length: 8.25" (21cm); Weight w/batteries: 1.73 oz. (49g).

Latent prints aren't always found in convenient locations. These brushes are particularly useful for dusting in darkened corners, under furniture, inside motor vehicles, etc. Utilizes 3 AAAA alkaline batteries, incorporates a 30,000-hr. LED and has an exceptionally long-life fiberglass brush head.



No. MBLB100
in use with
No. LL701 REDESCENT™
Fluorescent Powder.



No. MLB101 replaceable fiberglass brush head.

CAT. NO.	DESCRIPTION	PRICE
MLB100	Mini Light Brush	\$49.95
MLB100	Mini Blue Light Brush	\$59.95
MLB101	Replacement Fiberglass Brush Head	\$8.25

Copyright© 2008 by SIRCHIE Finger Print Laboratories, Youngsville, N.C. All Rights Reserved.

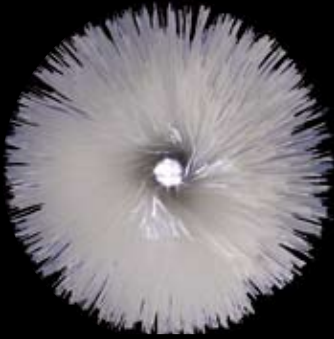
FLR7.08-603ENG-REV2

Replaceable Fiberglass Brush Head!

No. MLB100 shown approx. size.

Call **800-356-7311** Today or Order On-Line at **www.sirchie.com**

MINI LIGHT BRUSH KITS



No. MLB100 brush head view of LED.

MLB100K CONTENTS:

- 1- MLB100 Mini Light Brush
- 3- AAAA Alkaline Batteries
- 1- MLB101 Replacement Fiberglass Brush Head
- 1- 107L "Hi-Fi" Copper Metallic Volcano Latent Print Powder, 2 oz. (59ml)
- 1- 101L "Hi-Fi" Silk Black Volcano Latent Print Powder, 2 oz. (59ml)
- 1- 144L2 Transparent Lifting Tape, 2' x 360" (5.1cm x 9.1m)
- 1- LB003 Gloss White Latent Print Backing Cards, 3' x 5" (7.6cm x 12.7cm), pad of 50
- 2- SF00761 Latex Glove Pairs, Lg, Ambidextrous
- 1- MLB100C Black Molded Copolymer Case; Dimensions: 12.25" x 9" x 3.875" (31.1cm x 22.9cm x 9.8cm); Weight: 2.76 lbs. (1.25kg)



No. MBLB100 brush head view of LED.

MBLB100K CONTENTS:

- 1- MBLB100 Mini Blue Light Brush
- 3- AAAA Alkaline Batteries
- 1- MLB101 Replacement Fiberglass Brush Head
- 1- LL701 REDESCENT™ Fluorescent Print Powder, 2 oz. (59ml)
- 1- LL703 GREENESCENT™ Fluorescent Print Powder, 2 oz. (59ml)
- 1- BMS300 Orange Barrier Filter Goggles
- 2- SF00761 Latex Glove Pairs, Lg, Ambidextrous
- 1- MLB100C Black Molded Copolymer Case; Dimensions: 12.25" x 9" x 3.875" (31.1cm x 22.9cm x 9.8cm); Weight: 2.46 lbs. (1.11kg)

Mini Light Brush & Mini Blue Light Brush Kits

For added convenience, we paired the MLB100 Mini Light Brush and the MBLB100 Mini Blue Light Brush up in their own kits. The **MLB100K** Mini Light Brush Kit contains a replacement brush head, two latent print powders, transparent lifting tape, backing sheets, and latex gloves. The **MBLB100K** Mini Blue Light Brush Kit contains a replacement brush head, two fluorescent print powders, orange barrier filter goggles, and latex gloves.



No. MLB100K Kit and Components



No. MBLB100K Kit and Components

CAT. NO.	DESCRIPTION	PRICE
MLB100K	Mini Light Brush Kit	\$89.95
MBLB100K	Mini Blue Light Brush Kit	\$99.95